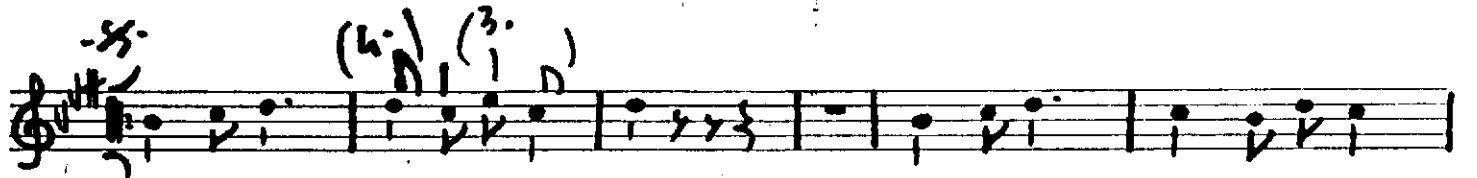


Söz ve Müzik:
YALÇIN TURA

Söz ve Müzik:
YALÇIN TURA



el - le - re ver -

bir gûle ver -

ben ka ni ver-

ben schon gel.



Gòn-lũ-mù

$$\bar{A} = A_1 - m_1$$

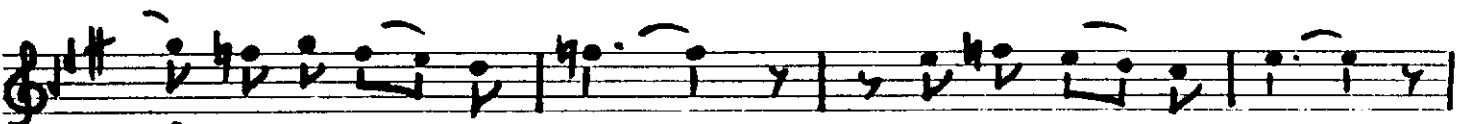
Zehr. i. vi

GOIN IN THE



1.2.3.4) "Ah!"

1000



Pu-lu ney-le-yim,

